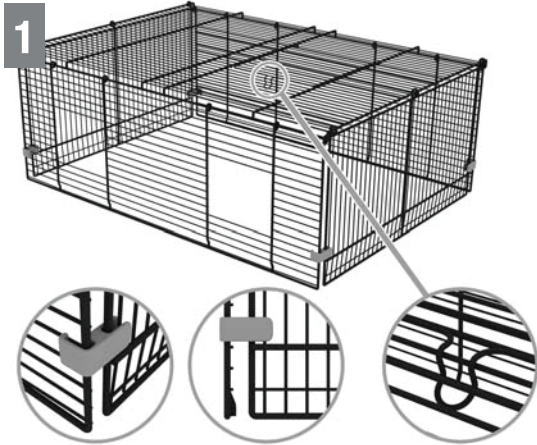
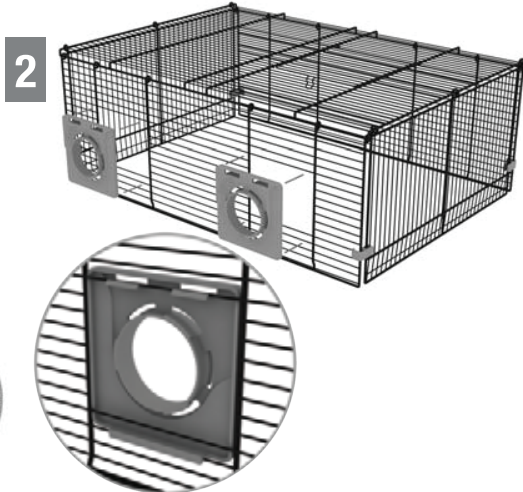


GENUS ASSEMBLY INSTRUCTIONS

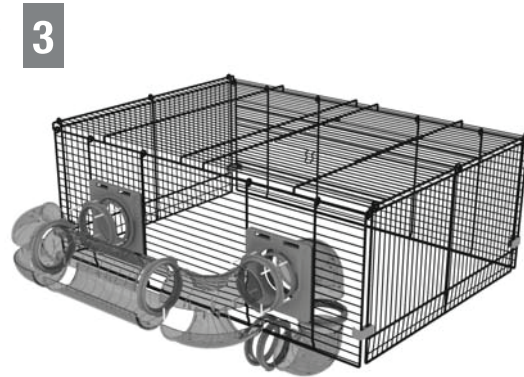
200



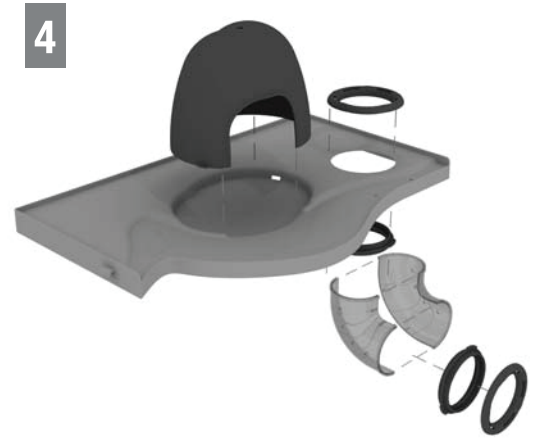
With cage door clip facing downwards, fold down the sides of the *Wire Cage*. Using the 4 *Cage Clips*, clip each corner into place.



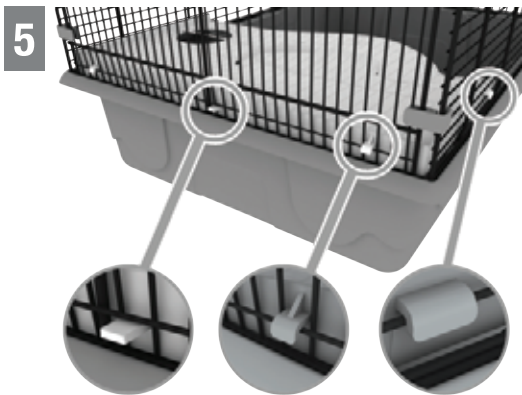
Clip the two *Portholes* into place in the openings on the long side. Make sure the bottom lug fits onto the second rung down from the opening.



Assemble to *Tubing* using the *Tube Connector Rings* and placing the *Anti Gnaw Rings* on the end.



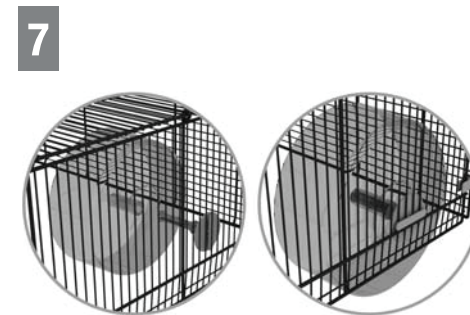
Clip the two halves of the *Corner Tube* together using the *Tube Connector Rings* - and locate in position on the Shelf. Place *Anti Gnaw Rings* on each end. Locate *House* on Shelf.



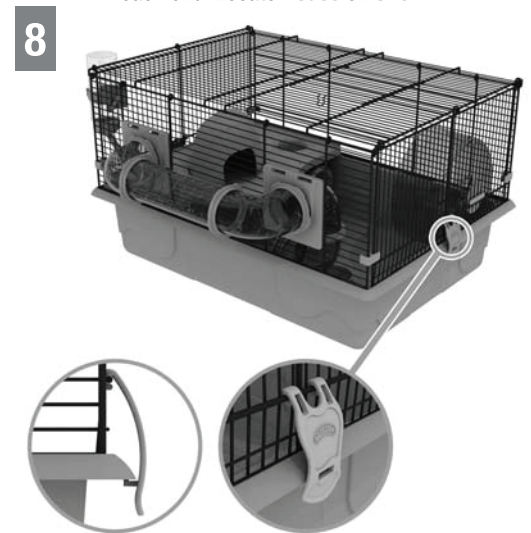
Locate assembled shelf inside the cage section using the hooks to locate on the wire.



Attach the *Bottle Holder* to the wire and insert *Bottle*. Use twist-lock action to locate & secure the holder.



Locate *Wheel* as shown, again using a twist lock action to secure.



Place assembled *Wire Cage* onto *Plastic Base*. Use the large *End Clips* as shown on the thicker section of wire - and clip into place.

INSTRUCTIONS FOR ASSEMBLY

Please use in conjunction with the photograph on the front, colours may vary to those shown. Carefully unpack the unit, remove all packaging and lay out all the pieces prior to assembly.

For further details and to download a larger version of the instructions please visit www.rotastak.co.uk

Rotastak reserve the right to change colours or specification without prior notification. Armitage Pet Care, Nottingham, NG4 2BA Customer Services 0115 9381242